



CAREER EXPLORER TABLEAU DASHBOARD

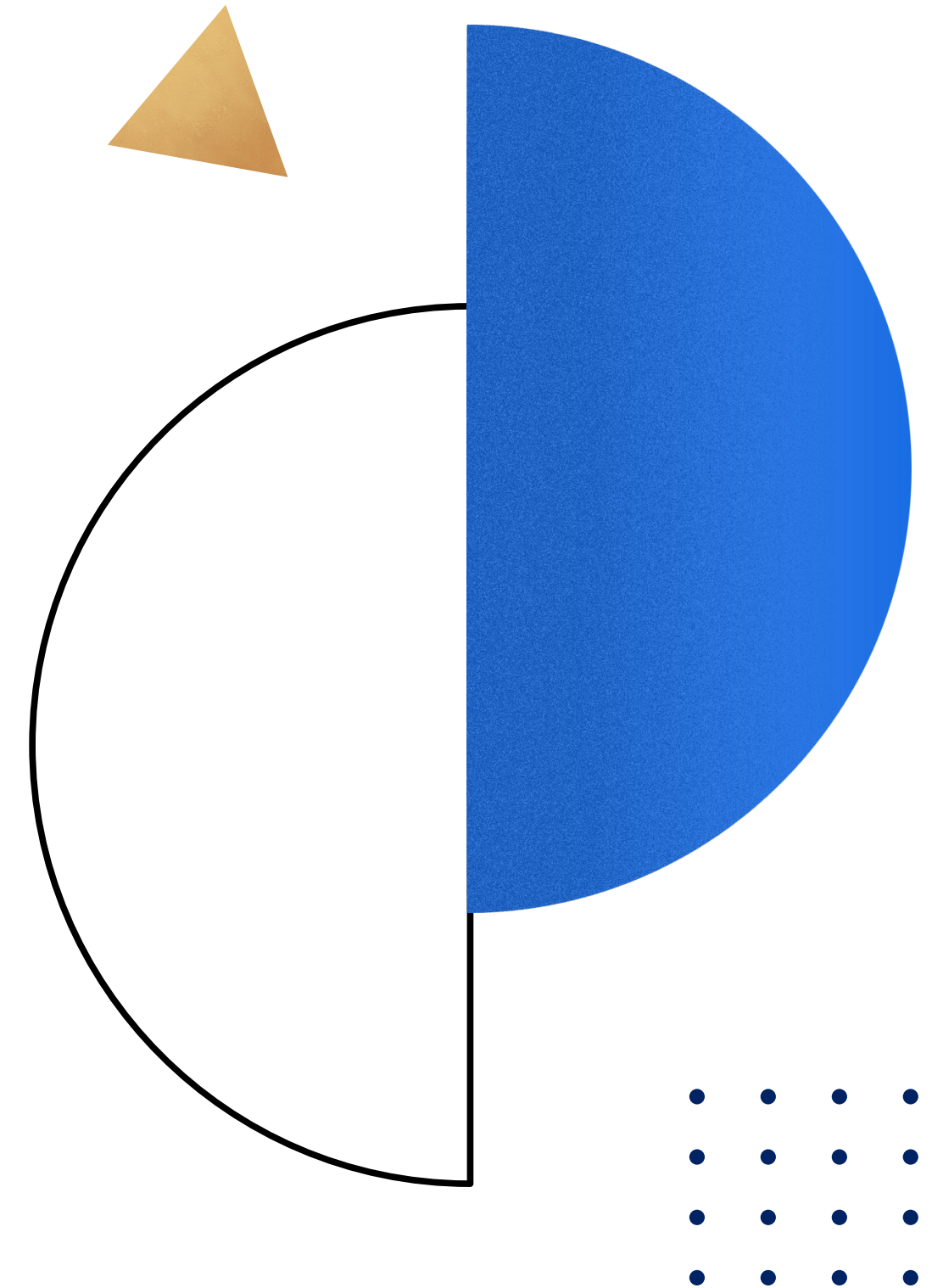


IS CAREER EXPLORER TABLEAU DASHBOARD

[The Career Explorer dashboard](#) is published on our website to help you explore the career paths and opportunities available in the world of Information Systems. Use it to create your career dream so that we can help you achieve it! The dashboard pulls the Marriott School placement data of IS students.

Tab 1 - Main Career Explorer

- o Filter the data by company name, placement type, state, job category, placement year (year the student started working in that position), program, and international sponsors (companies that have previously hired international students).
- o Use the lasso tool on the map to select specific cities/areas that interest you.
- o Look at the Breakdown table to see the instance of each opportunity a student has taken broken down by company, placement type, city, job category, job title, placement year, and program.
- o Select different categories on the pie chart to filter the whole dashboard by that job category. Hold down the Ctrl key on your keyboard to select multiple sections of the pie chart.



IS CAREER EXPLORER TABLEAU DASHBOARD

Tab 2 - Offering trends

- o This tab shows historic trends of when companies have made internship or full-time offers to BYU students.
- o If you are interested in a specific company, you can filter the trend line by that company to see when they usually pitch their offers. This is important because some companies are on campus the second week of fall semester while others do not start recruiting until January. Knowing this information will prepare you for when your dream company is most likely to offer your dream opportunity.

Tab 3 - Alumni & Skills

- o The data for this tab comes from a survey we send out to all IS students who have been out on internships or will be starting their full-time jobs. This is still in its beginning stages of development, so the database is relatively small.
 - o Use the Skills table to learn which hard skills are being used by companies. This table includes a hyperlink to the LinkedIn Job Search filtered by the skill you selected. This search is just another resource to explore companies you may be interested in pursuing.
- The Alumni table on this tab is a list of past or current students who have agreed to connect with students interested in the company they interned/worked for. Their email is listed so you can contact them directly. If you do not see a contact for a company you are interested in, come in and visit with Reid to access his connections

